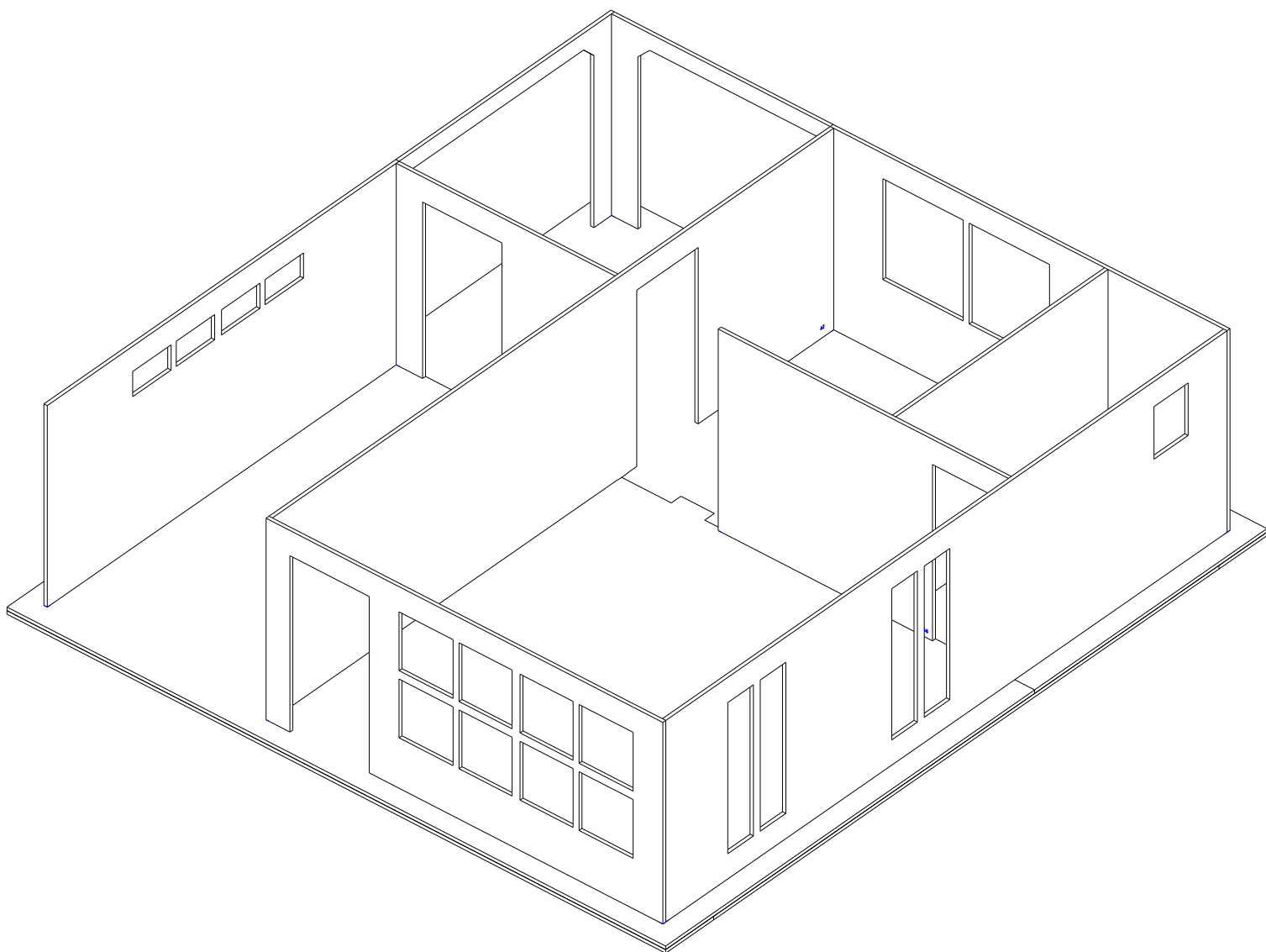




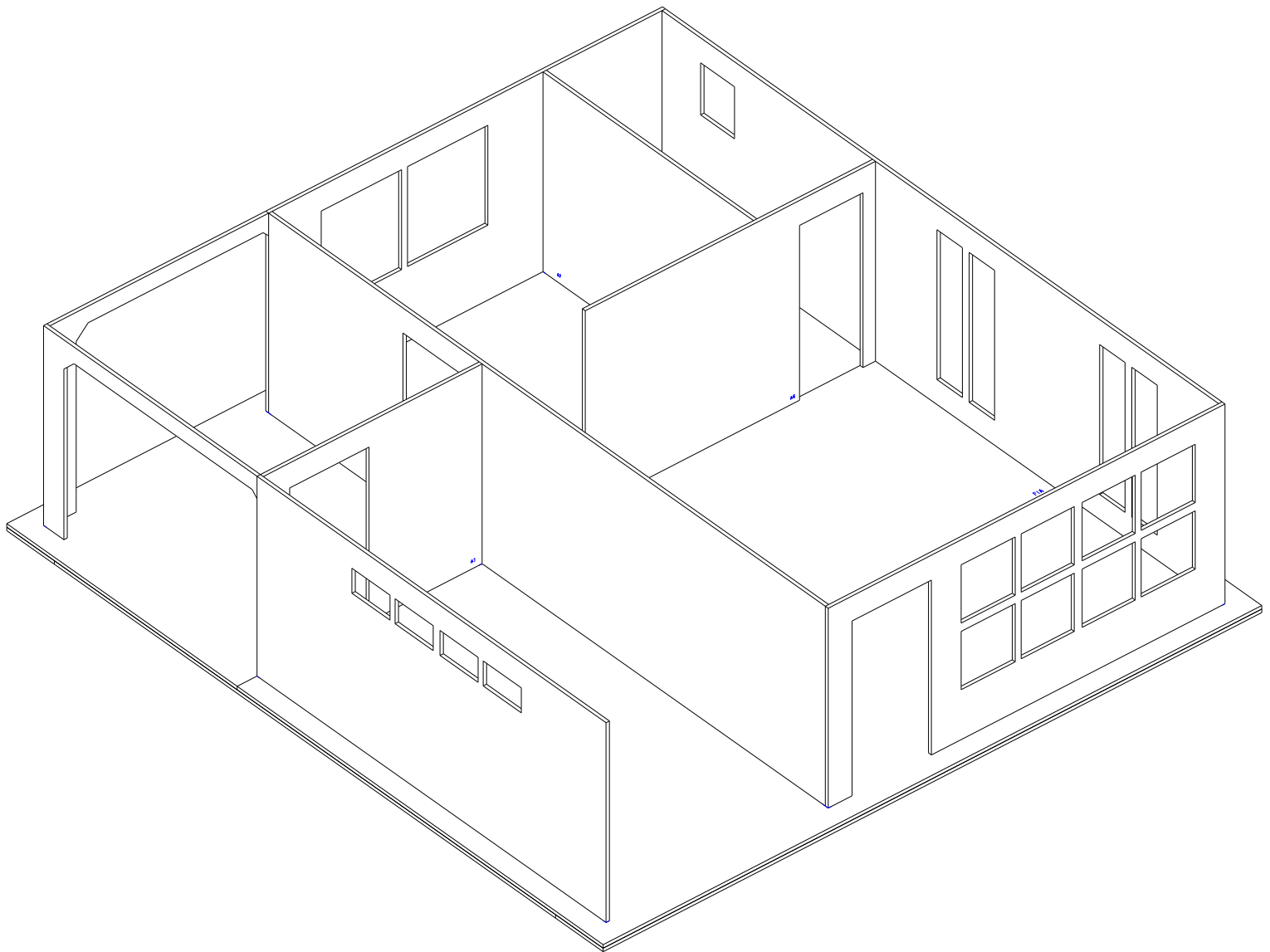
Manual de Montagem Sobrado 1:14

Andar Inferior





Vista do Andar Inferior

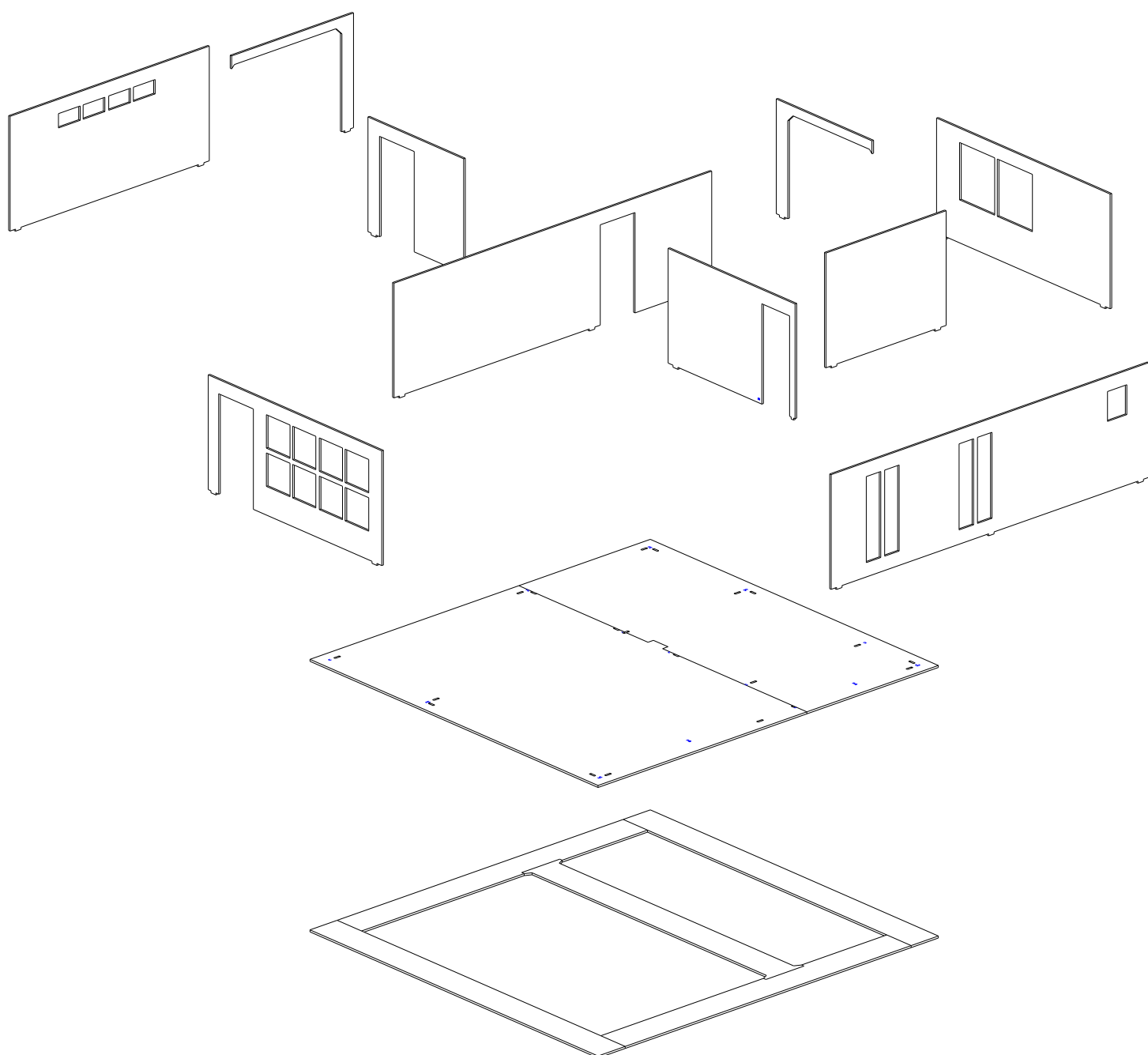




Andar Inferior

Vista Explodida

Todas as peças do Andar Inferior. Identificadas com a letra A, por exemplo: A1,A2...

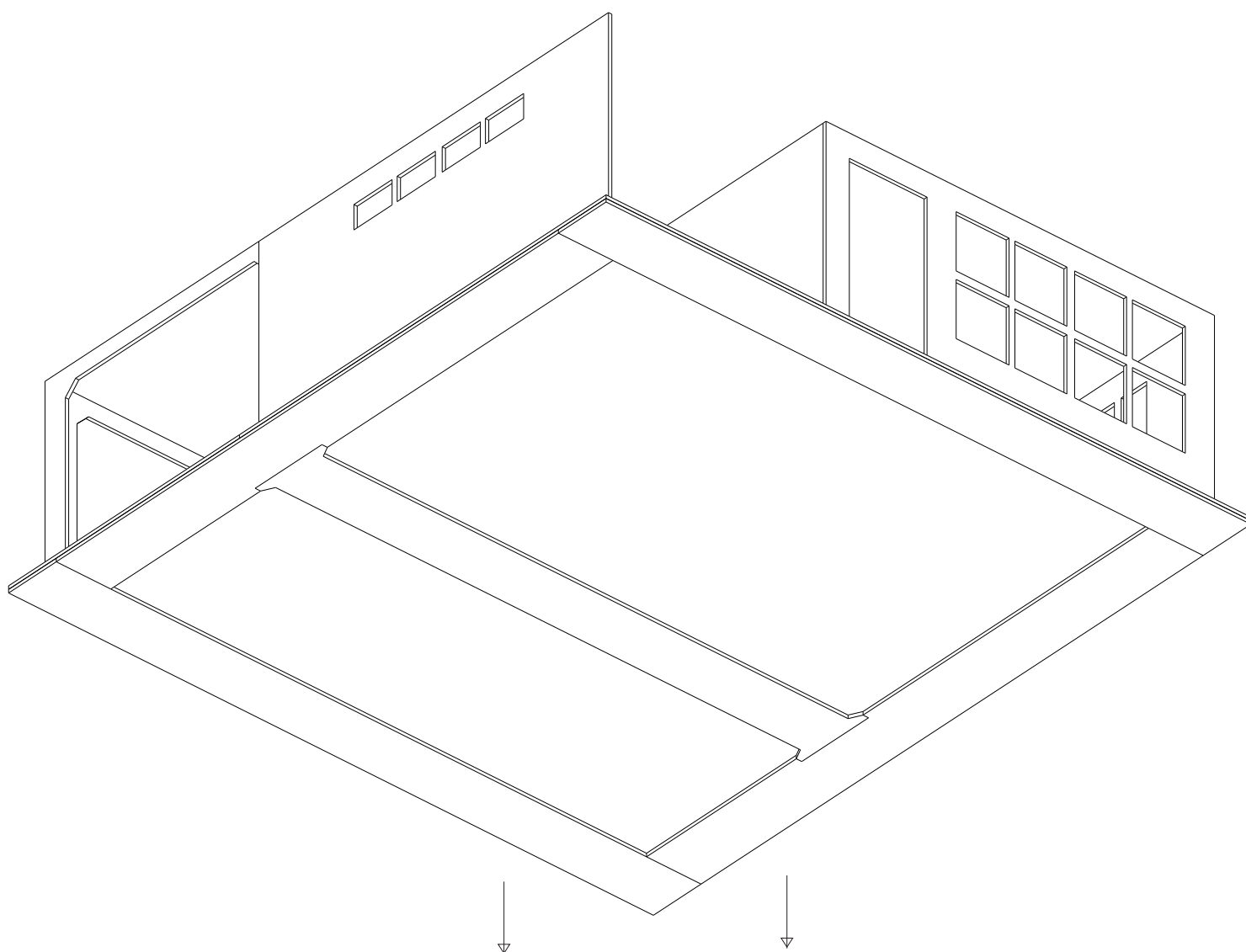




Andar Inferior

Vista de baixo do piso onde será colada todas as paredes do andar inferior.

Este reforço na parte inferior do piso é importante, deixará todo o andar bem rígido.



Ripas de Reforço



Passo 01

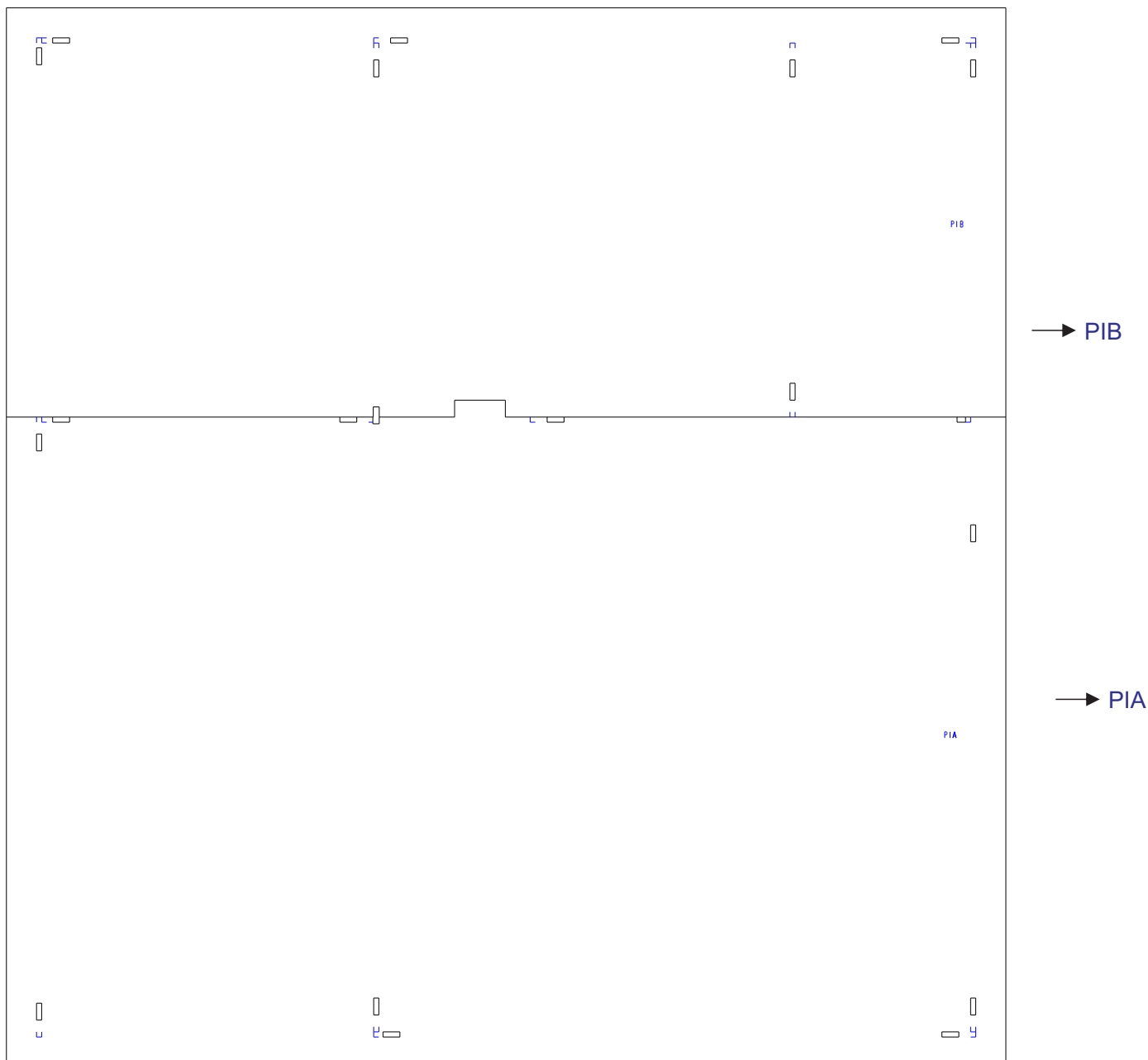
Separar as peças PIA e PIB

Encaixe as duas peças como na imagem abaixo.

Estes riscos mostram a face superior das peças.

Os buracos vazados servem para serem encaixadas as paredes.

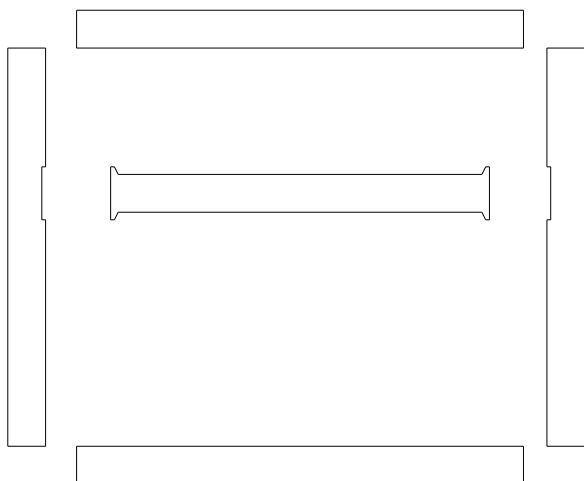
Os riscos são para alinhar as peças no momento da colagem.





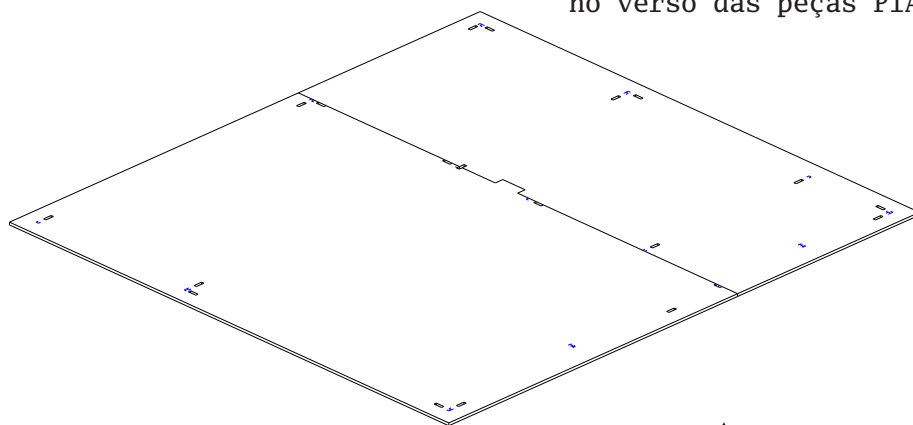
Passo 02A

Separar as ripas de suportes

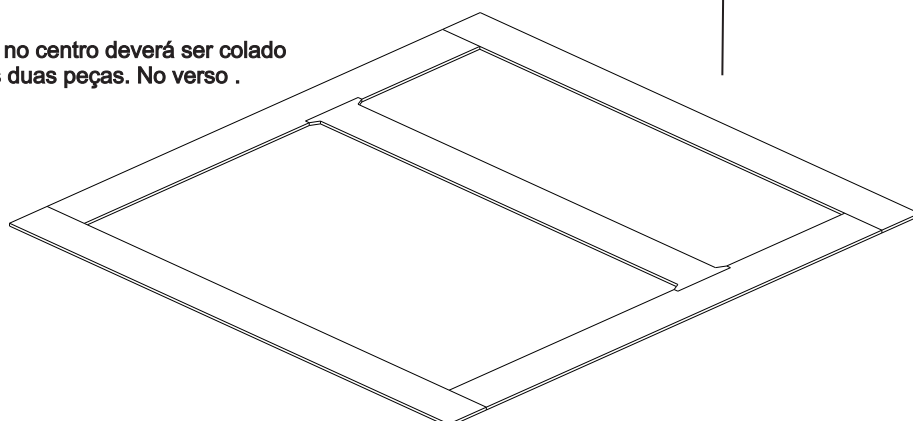


Passo 02B

Estes Suportes serão colados por trás do piso, ou seja, no verso das peças PIA e PIB



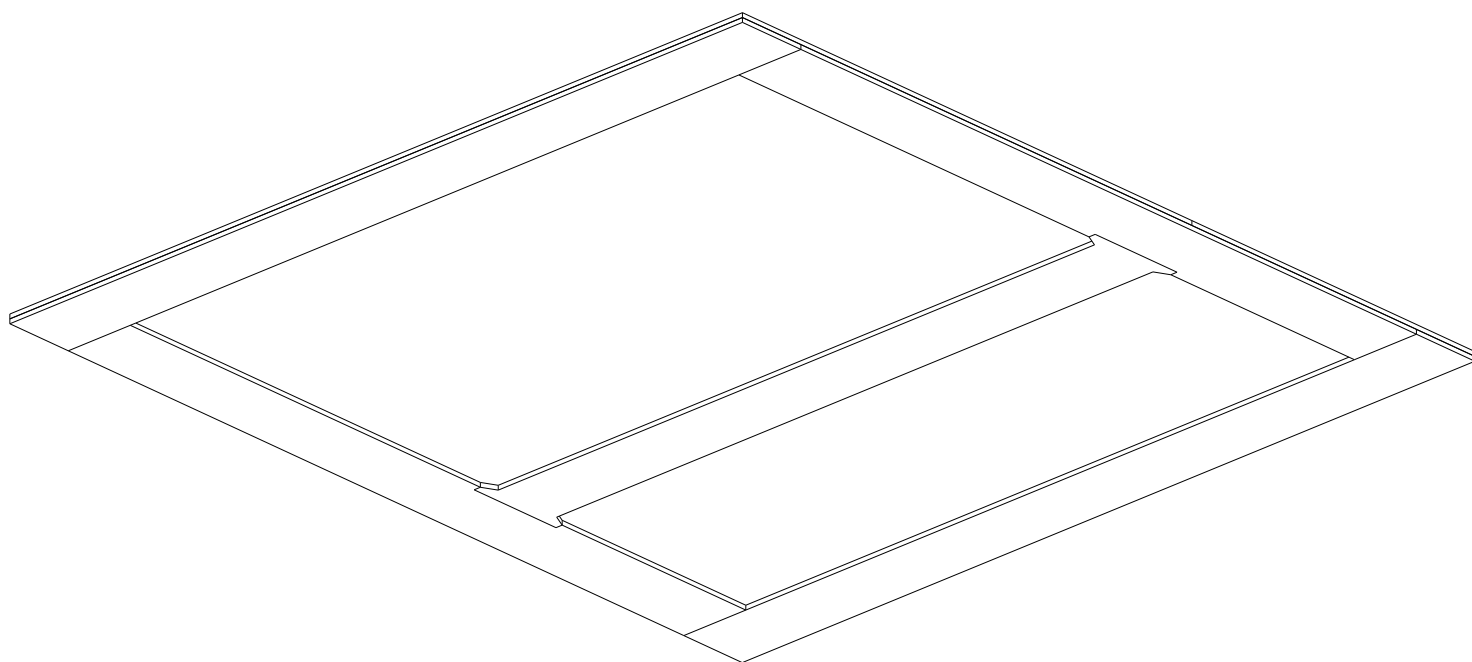
Atenção: Este suporte no centro deverá ser colado na linha de junção das duas peças. No verso. Verifique na página 7.





Passo 02C

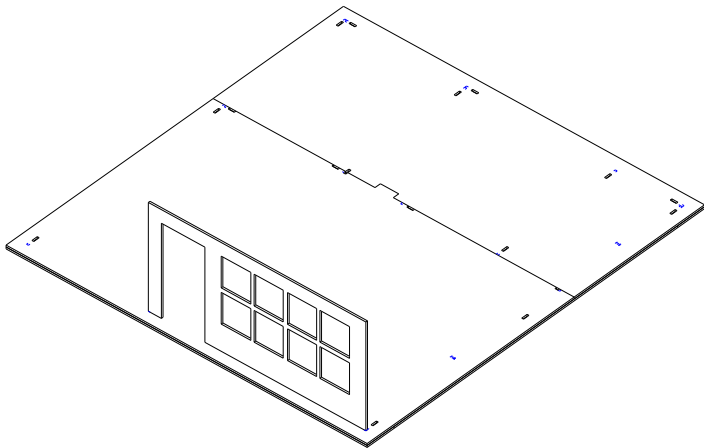
Esta é a parte de trás das peças PIA e PIB. Os suportes devem ser colados assim.





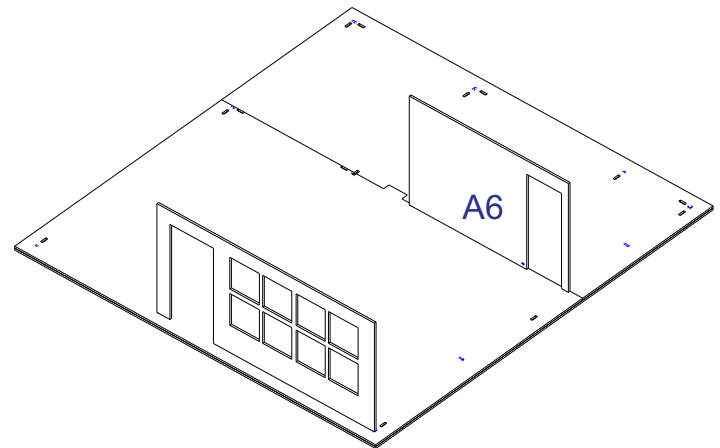
Andar Inferior

Passo 03

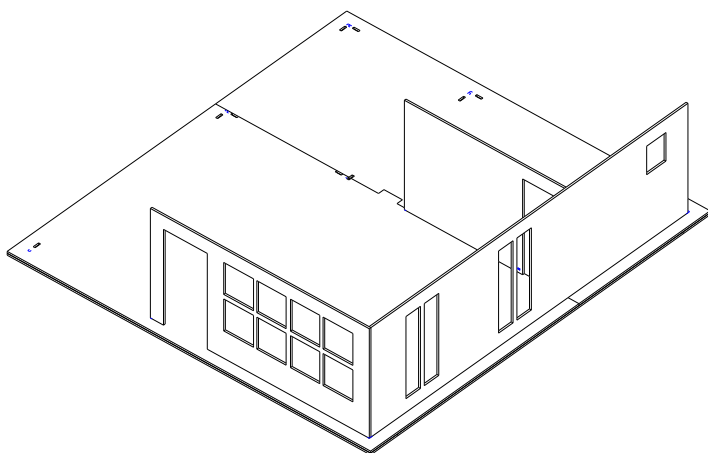


Passo 04

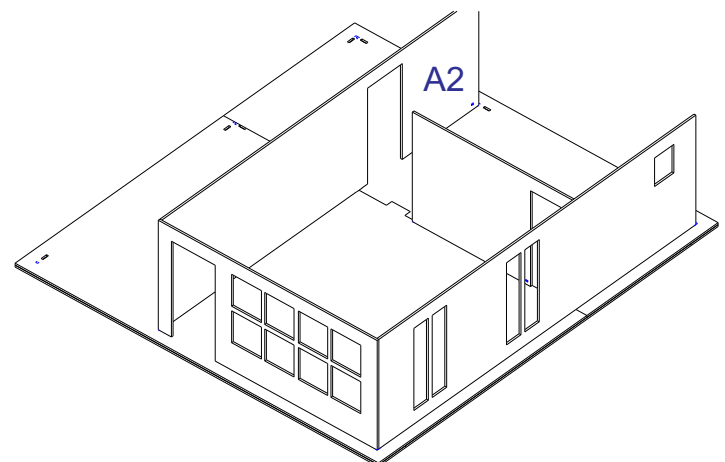
Cole a peça A6



Passo 05



Passo 06

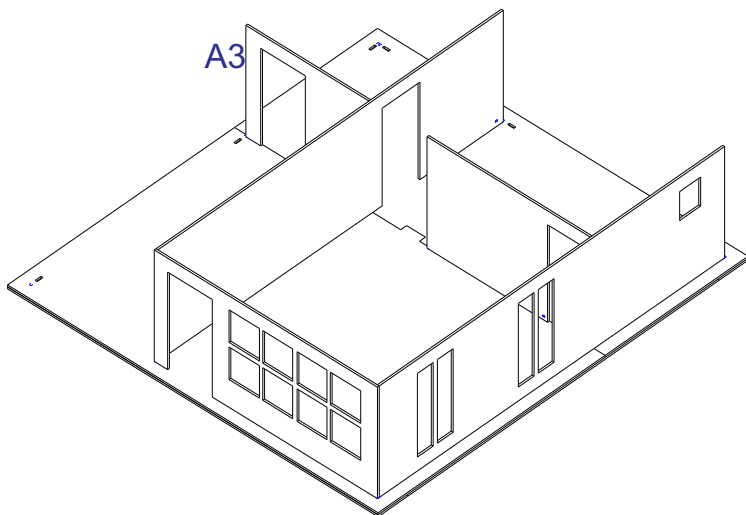




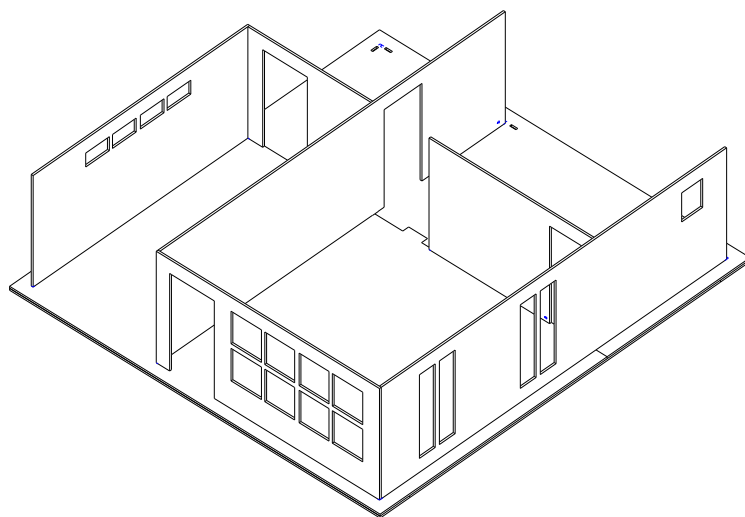
Andar Inferior

Passo 07

Cole a peça A3

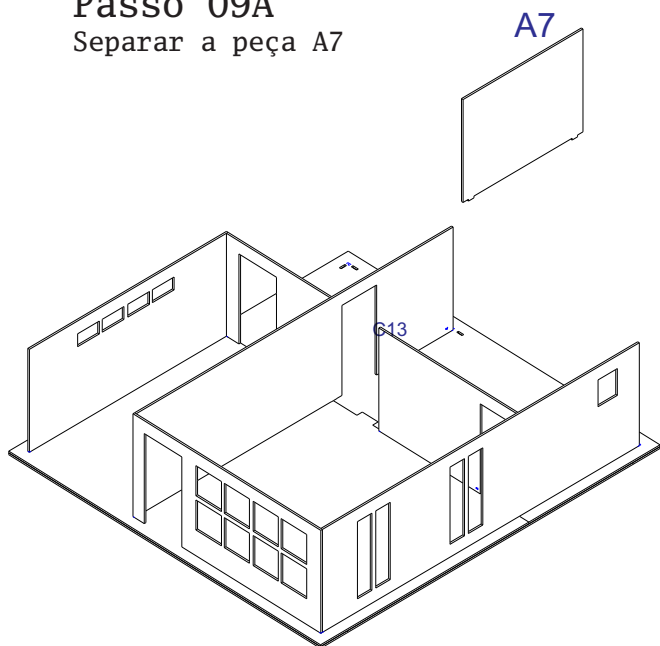


Passo 08



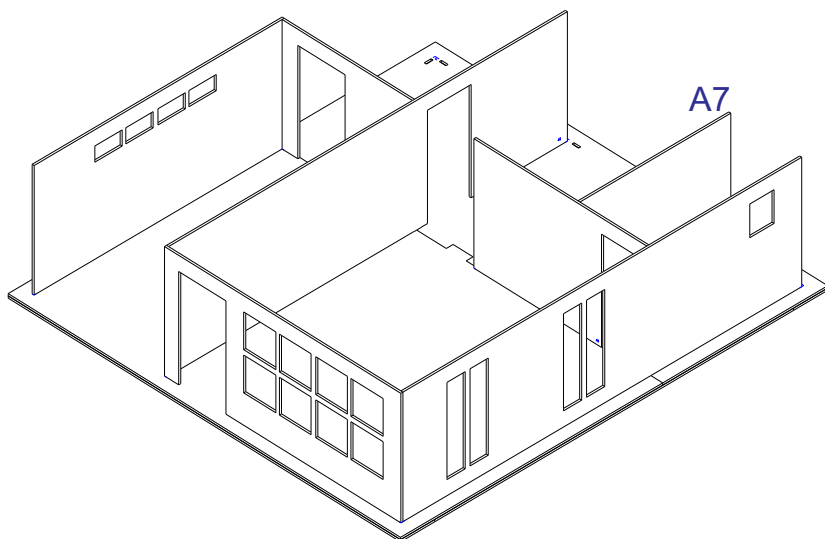
Passo 09A

Separar a peça A7



Passo 09B

Cole a Peça A7

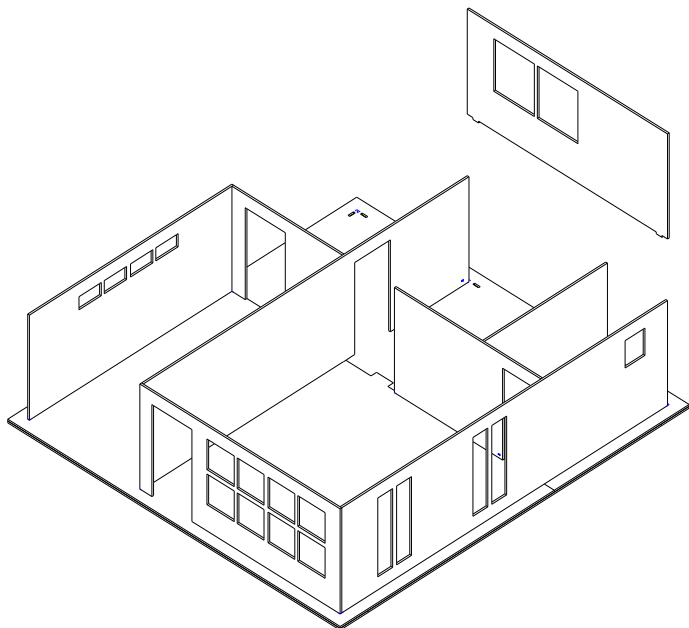




Andar Inferior

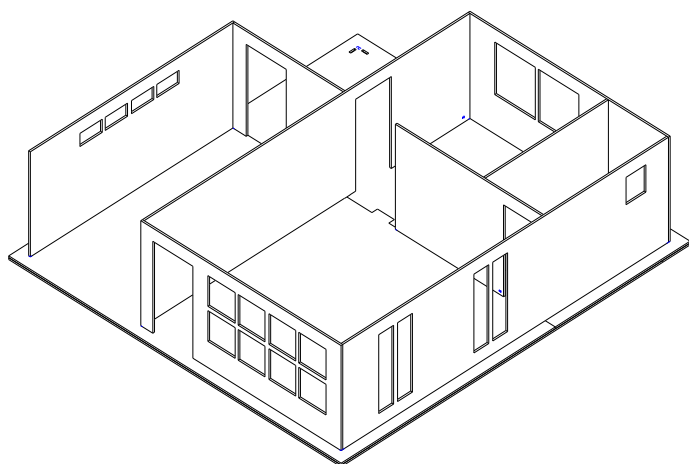
Passo 10A

Separar a peça com janela

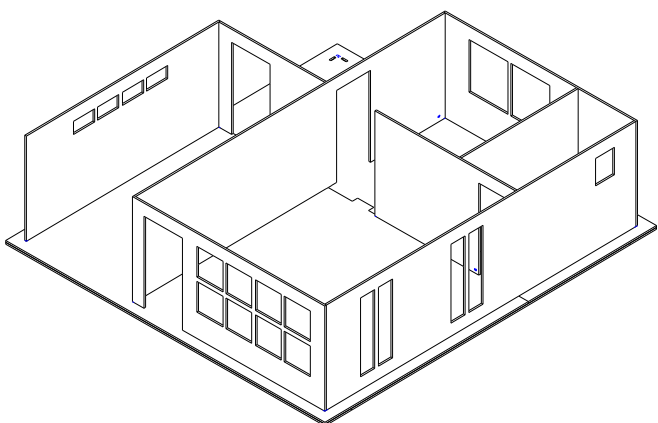
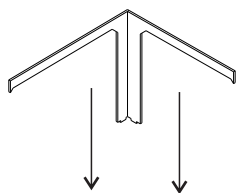


Passo 10B

Cole a peça com janela



Passo 11A



Passo 11B

